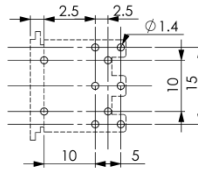
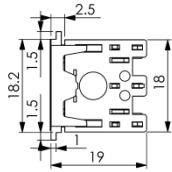
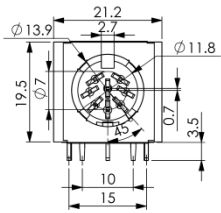
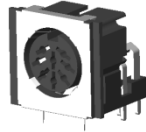


YE-137X DIN SOCKET DIP TYPE W/SHIELD



P.C.B. LAYOUT
(BOTTOM VIEW)

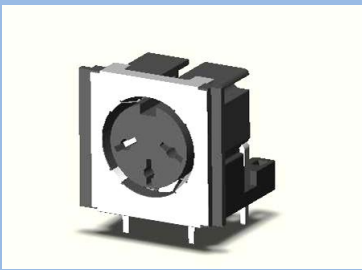
MATERIAL :

1. HUOSING : PBT
2. BASE : PBT
3. GND CONT. : COPPER NICKEL PTD.
4. SHIELD COVER : COPPER NICKEL PTD.
5. TERMINALS : BRASS TIN PTD.

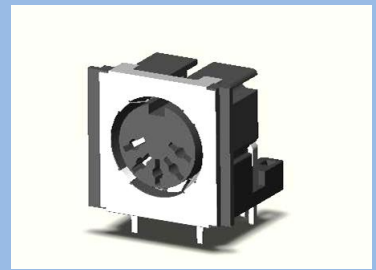
SPECIFICATION :

- Insulation Resistance :
100M Ω min. at 500V DC
- Dielectric Strength :
1,000V AC/1 minute
- Contact Resistance :
20m Ω Max.
- Rating :
2A 100V AC

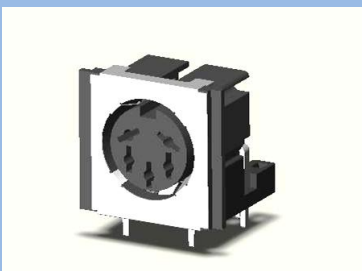
YE-1373	YE-1374	YE-1375A	YE-1375B	YE-1376	YE-1377	YE-1378A	YE-1378B



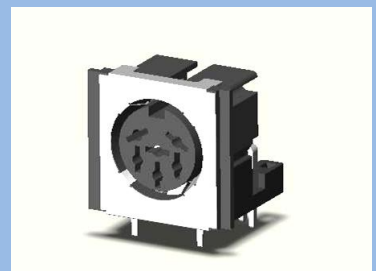
YE-1373



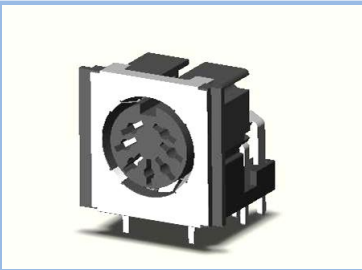
YE-1375A



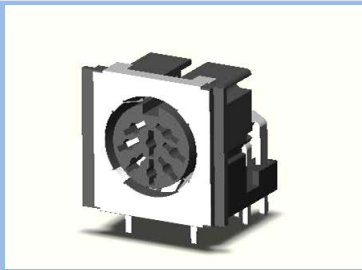
YE-1375B



YE-1376



YE-1377



YE-1378A



YE-1378B